

Ideen leben



Always a little more flexible:
häwa Hygienic Equipment





häwa Hygienic Equipment Enclosures Type 3353

- For hygiene-compliant production in open processes
- Protection class: IP66/69
- Gap-free fitted hygienic seal
- 30° roof inclination and with rain gutter



Advice from one of our häwa consultants:

If you are looking for enclosures for the food processing and pharmaceutical industry with easy handling and robustness, then we are the perfect partner for you.

Just contact your local consultant for further information!



Photo: Hygienic equipment enclosure type HE3353



Order number:
3070-0050-00-00

Product Description

- HE3353 hygienic equipment enclosures made of stainless steel are designed for the use on machines and on low-voltage switchgear and controlgear combinations for the food and luxury goods industry.
- All relevant surfaces are inclined forward: roof 30°, door continuously 10°.
- The external blue silicone seal, in accordance with FDA requirements 177.260 ensures a gap-free sealing (no dead zones).
- Protective ground connection to DIN EN 61439-1, M6 x 16 studs on door and body.
- Lock: quarter turn latch lock with insert width across flats 13 mm, external seal.
- Internal hinges, door opening angle 110°.
- Mounting plate on M8 x 35 studs fixed on rear panel - max. 10 mm adjustable to height. Flanged mounting plate fix mounted.
- HE3353 enclosures can be equipped with häwa enclosure accessories.

Notice

- Other dimensions, inclination degrees or customized modifications are available upon request.
- To the top lengthened mounting plates are available upon request.
- Additional accessories available upon request.

Scope of Delivery

- Enclosure with mounting plate, door and 1 key SW13.

Technical Data

- Option: with mounting plate
- Material thickness body: 1.5 mm
- Material thickness door: 1.5 mm
- Max. installation depth: from D-16 or D-24 mm with flanged mounting plate (20 mm).
- Protective ground connection: to DIN EN 61439-1
- Surface finish: externally brushed, roughness < 0.8 µm
- Lock: completely made of stainless steel
- Mounting plate: galvanized.
2 mm, from enclosure width/height 600 x 600 mm (nominal dimensions) 2.5 mm, from enclosure width/height exceeding 800 mm (nominal dimensions) flanged 20 mm.
- Protection class: IP66/69
- Material: stainless steel no. 1.4301

Hygienic equipment enclosures type HE3353

Nominal dimensions (W x H x D)	External dimensions				Order number
	Enclosure width	Front enclosure height	Rear enclosure height	Enclosure depth	
420 x 420 x 200	420	420	535	200	3353-4040-20-10
420 x 620 x 250	420	620	764	250	3353-4060-25-10
620 x 620 x 200	620	620	735	200	3353-6060-20-10
620 x 620 x 300	620	620	793	300	3353-6060-30-10
620 x 820 x 300	620	820	993	300	3353-6080-30-10
820 x 1020 x 350	820	1020	1222	350	3353-8010-35-10
1020 x 1220 x 300	1020	1220	1393	300	3353-1012-30-10



häwa Hygienic Equipment Junction Boxes Type 2451

- For hygiene-compliant production in open processes
- Protection class: IP66/69
- Gap-free fitted hygienic seal
- Continuously inclined surfaces



Advice from one of our häwa consultants:

You are looking for an enclosure with special dimensions?
Do not hesitate to call us!

We supply your enclosures in your required dimensions!

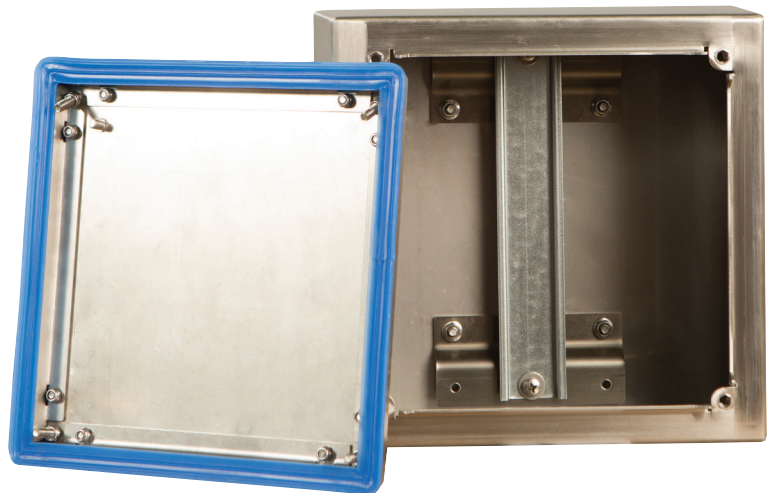


Photo: Hygienic equipment junction box type HE2451



Product Description

- HE2451 hygienic equipment junction boxes made of stainless steel are designed for the use on machines and low-voltage switchgear and controlgear combinations for the food and luxury goods industry.
- All surfaces are inclined forward: roof 30°, lid continuously 10°.
- The external blue silicone seal, in accordance with FDA requirements 177.260 ensures a gap-free sealing (no dead zones).
- Protective ground connection to DIN EN 61439-1, M5 x 10 studs on lid and body.
- Lock: captive hexagon screws with external sealing.
- HE2451 junction boxes can be equipped with häwa enclosure and junction box accessories. The Z-profiles are made of stainless steel.

Notice

- Other dimensions, inclination degrees or customized modifications are available upon request.
- Additional accessories available upon request.

Scope of Delivery

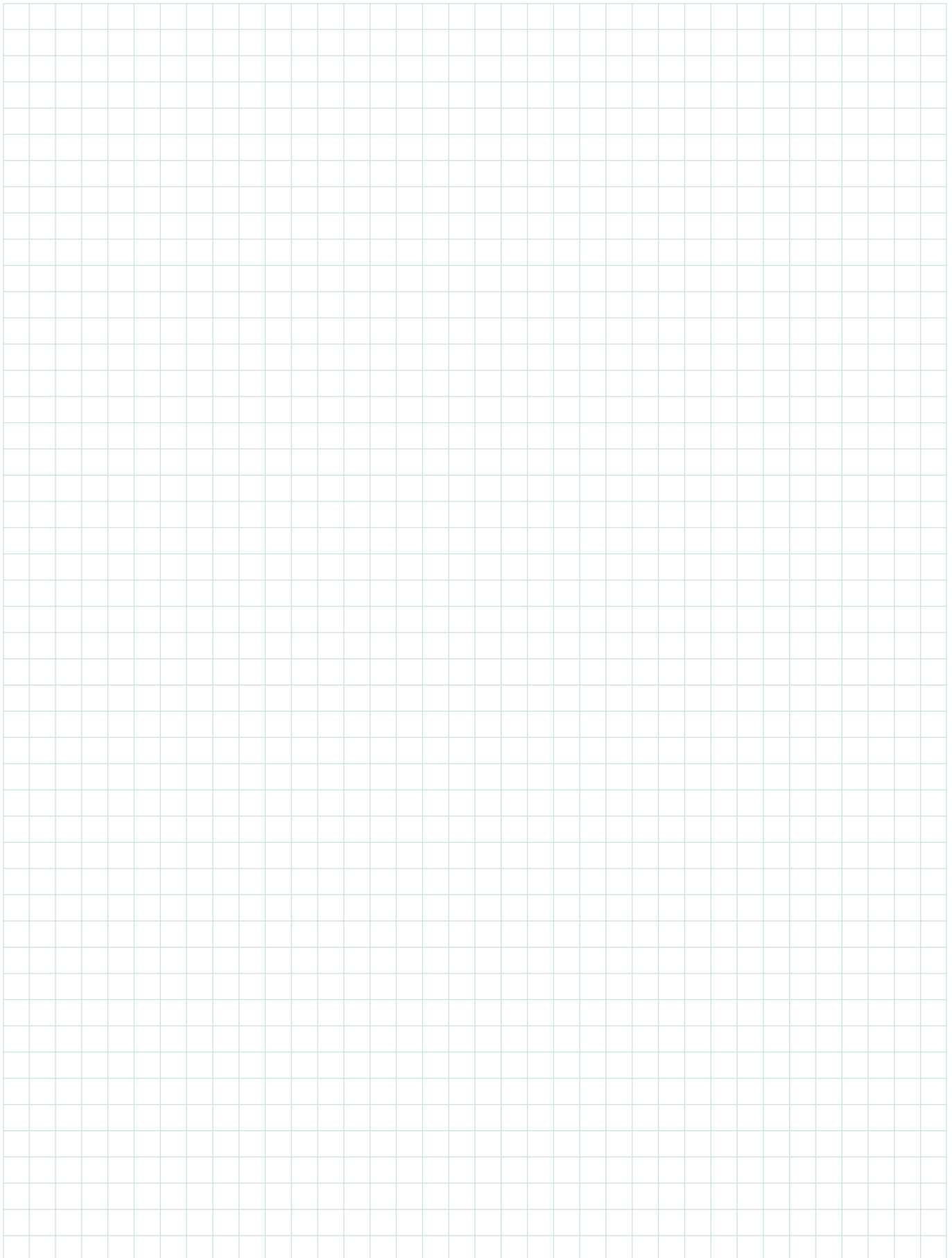
- Junction box with lid and mounting hardware.

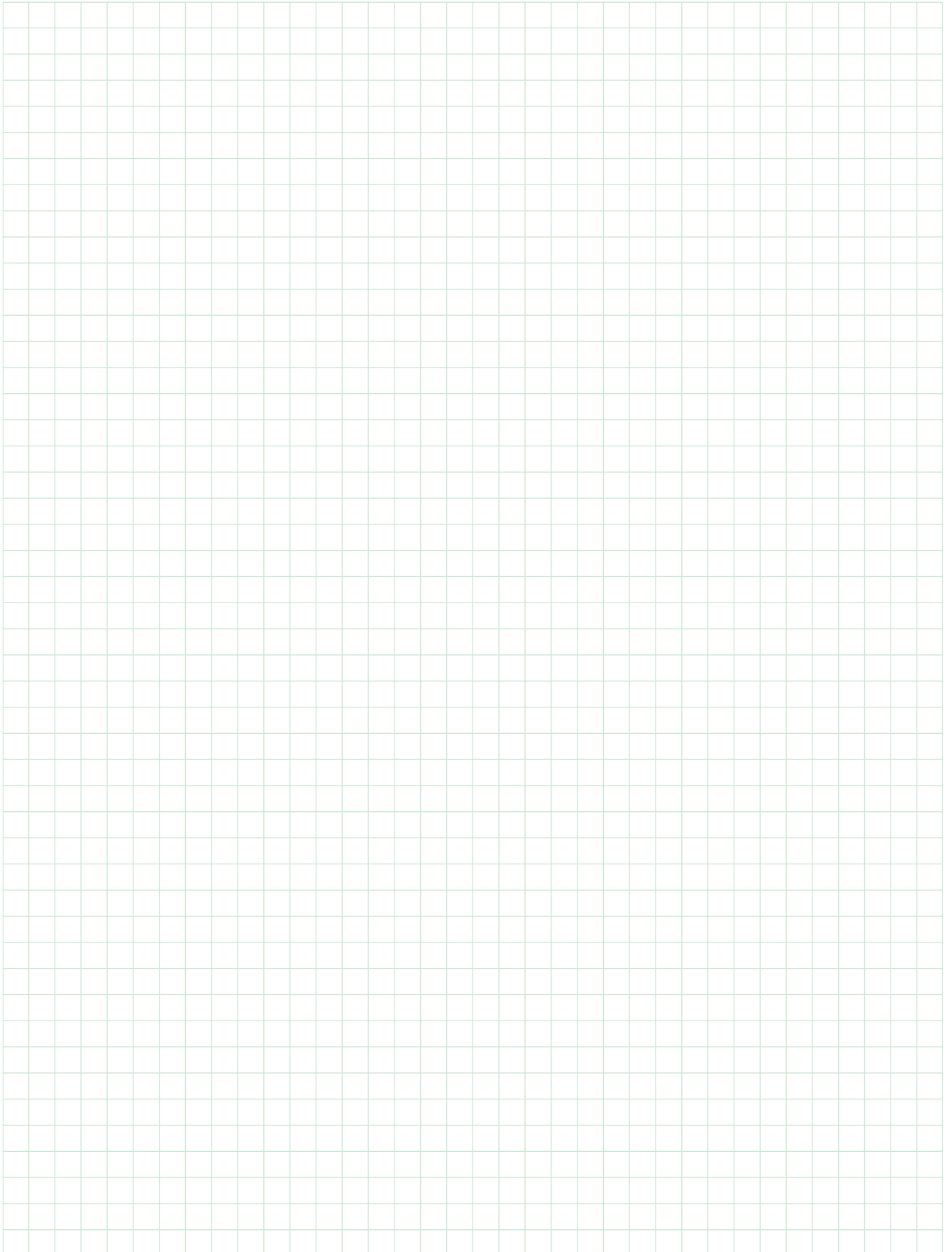
Technical Data

- Option: without equipment, bolted lid
- Material thickness body: 1.5 mm
- Material thickness lid: 1.5 mm
- Protective ground connection: to DIN EN 61439-1
- Surface finish: externally brushed, roughness < 0.8 µm
- Protection class: IP66/69
- Material: stainless steel no. 1.4301

Hygienic equipment junction boxes type HE2451

Nominal dimensions (W x L x D)	External dimensions				Order number
	Enclosure width	Front enclosure length	Rear enclosure length	Enclosure depth	
200 x 200 x 120	200	200	229	120	2451-2020-12-00
300 x 200 x 120	300	200	229	120	2451-3020-12-00
300 x 300 x 120	300	300	329	120	2451-3030-12-00
400 x 300 x 120	400	300	329	120	2451-4030-12-00





häwa GmbH
 Industriestraße 12
 D 88489 Wain
 Tel. +49 7353 98460
 Fax +49 7353 1050
 info@haewa.de
 www.haewa.de



D 08451 Crimmitschau

Sachsenweg 3
 Tel. +49 3762 95271/2
 Fax +49 3762 95278
 vertrieb.c@haewa.de

D 47167 Duisburg

Gewerbegebiet Neumühl
 Theodor-Heuss-Str. 128
 Tel. +49 203 346530
 Fax +49 203 589785
 vertrieb.d@haewa.de

D 63477 Maintal

Dörnigheim
 Carl-Zeiss-Straße 7
 Tel. +49 6181 493031
 Fax +49 6181 494003
 vertrieb.rm@haewa.de

A 4020 Linz

Schmachtl GmbH
 Pummererstraße 36
 Tel. +43 732 76460
 Fax: +43 732 785036
 office.linz@schmachtl.at

CH 8967 Widen

häwa (Schweiz) ag
 Gyrenstrasse 5a
 Tel. +41 43 3662222
 Fax +41 43 3662233
 info@haewa.ch

DK 6400 Sonderborg

Eegholm A/S
 Grundtvigs Allé 165 - 169
 Tel. +45 73 121212
 Fax: +4573 121213
 eegholm@eegholm.dk

E 48450 Etxebarri

haweia ibérica, s.l.
 Poligono Leguizamón
 Calle Guipuzcoa, Pab.9
 Tel. +34 944 269521
 Fax: +34 944 261087
 haweia@ctv.es

F 67140 Eichhoffen

häwa France Sarl
 8 B Rue des Industries
 Tel. +33 3 88088880
 Fax: +33 3 88088859
 info@haewa.fr

I 88489 Wain

häwa Italia
 Industriestraße 12
 Tel. +49 7353 9846115
 Fax +49 7353 1050
 info@haewa.it

NL 7500 AC Enschede

häwa Nederland B.V.
 Postbus 136
 Tel. +31 53 4321835
 Fax +31 53 4303414
 info@haewa.nl

SE 88489 Wain

häwa Schweden
 Industriestraße 12
 Tel. +49 7353 98460
 Fax +49 7353 1050
 info@haewa.se

SE 192 79 Sollentua
 (only for tools)

Nelco Contact AB
 Bergkällvägen 29
 Tel. + 46 8 7547040
 Fax +46 8 7548051
 info@nelco.se

USA Duluth, GA 30097

häwa Corporation
 3768 Peachtree Crest Drive
 Tel. +1 770 9213272
 Fax +1 770 9212896
 info@haewa.com

RUS 88489 Wain

häwa Russland
 Industriestraße 12
 Tel. +49 7353 9846 169
 Fax +49 7353 1050
 edgar.getz@haewa.de



CABINET SYSTEMS



X-FRAME



ENCLOSURES



ACCESSORIES



CLIMATE CONTROL



CABLE DUCTS



CUSTOMIZED SOLUTIONS



TOOLS